

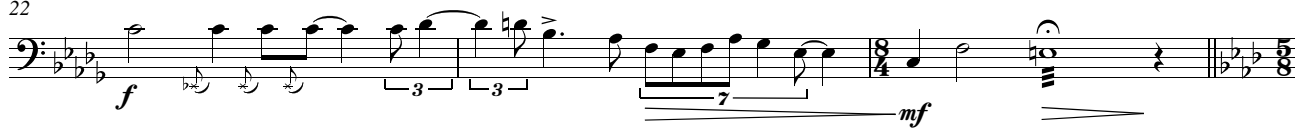
서울시국악관현악단 일반단원 채용 실기전형(1차) 제시곡 대 아 쟁

♩ = 90

대아쟁

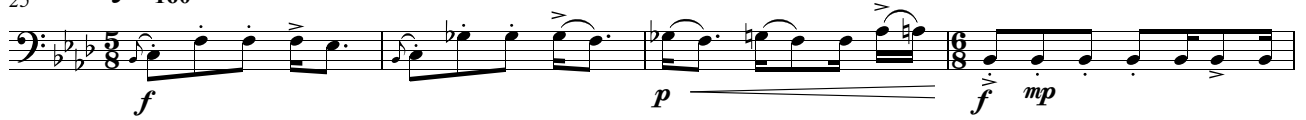
The musical score for Dae-a-jung is written in bass clef with a key signature of three flats (B-flat, E-flat, A-flat) and a 6/4 time signature. The tempo is marked as ♩ = 90. The score consists of 20 measures, with measure numbers 3, 6, 9, 12, 14, 17, and 20 indicated at the start of their respective lines. The music features a variety of dynamics including *sfz* (sforzando), *p* (piano), *f* (forte), *mf* (mezzo-forte), *mp* (mezzo-piano), *ff* (fortissimo), *fp* (forzando), *pp* (pianissimo), and *p subito*. Articulations such as accents (>) and slurs are used throughout. Measure 12 includes a section marked *accel.* (accelerando) and *rit.* (ritardando). Measure 17 includes the instruction *arco* (arco) for the right hand (RH) and *pizz.* (pizzicato) for the left hand (LH). The score concludes with a *pp* dynamic in measure 19.

22



25

♩ = 160



29



33

