

세종대극장

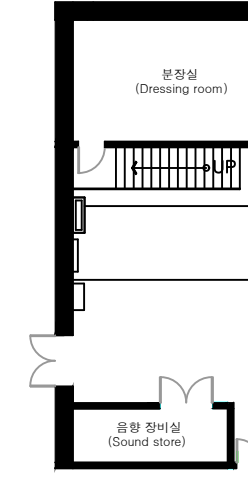
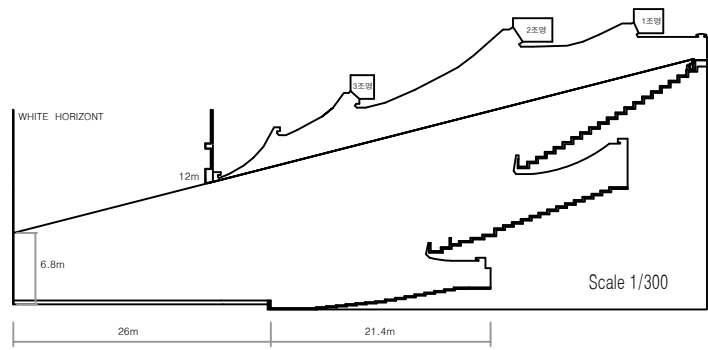
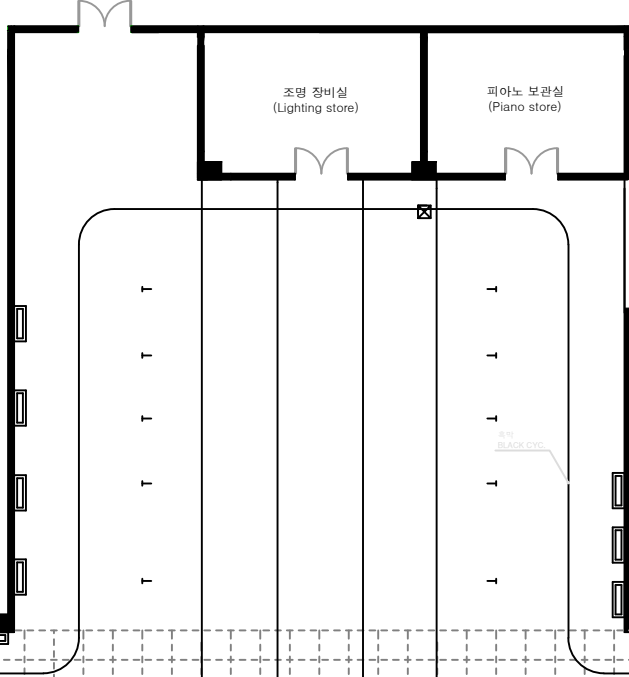
세종문화회관 대극장 무대평면도 SEJONG CENTER FOR THE PERFORMING ART GRAND THEATER STAGE PLAN

No.	SPEED (m/min)	LENGTH (m)	TYPE	SET
1	0-60	23	B	
2	0-60	29	C	
3	0-60	29	A	
4	0-60	29	A	
5	0-60	29	B	
6	0-60	29	A	
7	0-60	29	B	
8	0-60	29	A	
9	0-60	29	A	
10	0-60	29	A	
11	0-60	29	A	
12	0-60	29	A	
13	0-60	29	A	
14	0-60	29	A	
15	0-60	29	A	
16	0-60	29	B	
17	0-60	29	B	
18	0-60	29	A	
19	0-60	29	A	
20	0-60	29	A	
21	0-60	29	A	
22	0-60	29	A	
23	0-60	29	A	
24	0-60	29	A	
25	0-60	29	A	
26	0-60	29	A	
27	0-60	29	A	
28	0-60	29	A	
29	0-60	29	A	
30	0-60	29	A	
31	0-60	29	A	
32	0-60	29	A	
33	0-60	29	A	
34	0-60	29	A	
35	0-60	29	A	
36	0-60	29	A	

A Type : WINCH & WEIGHT
 B Type : WEIGHT
 C Type : WINCH

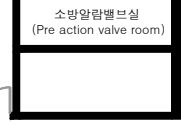
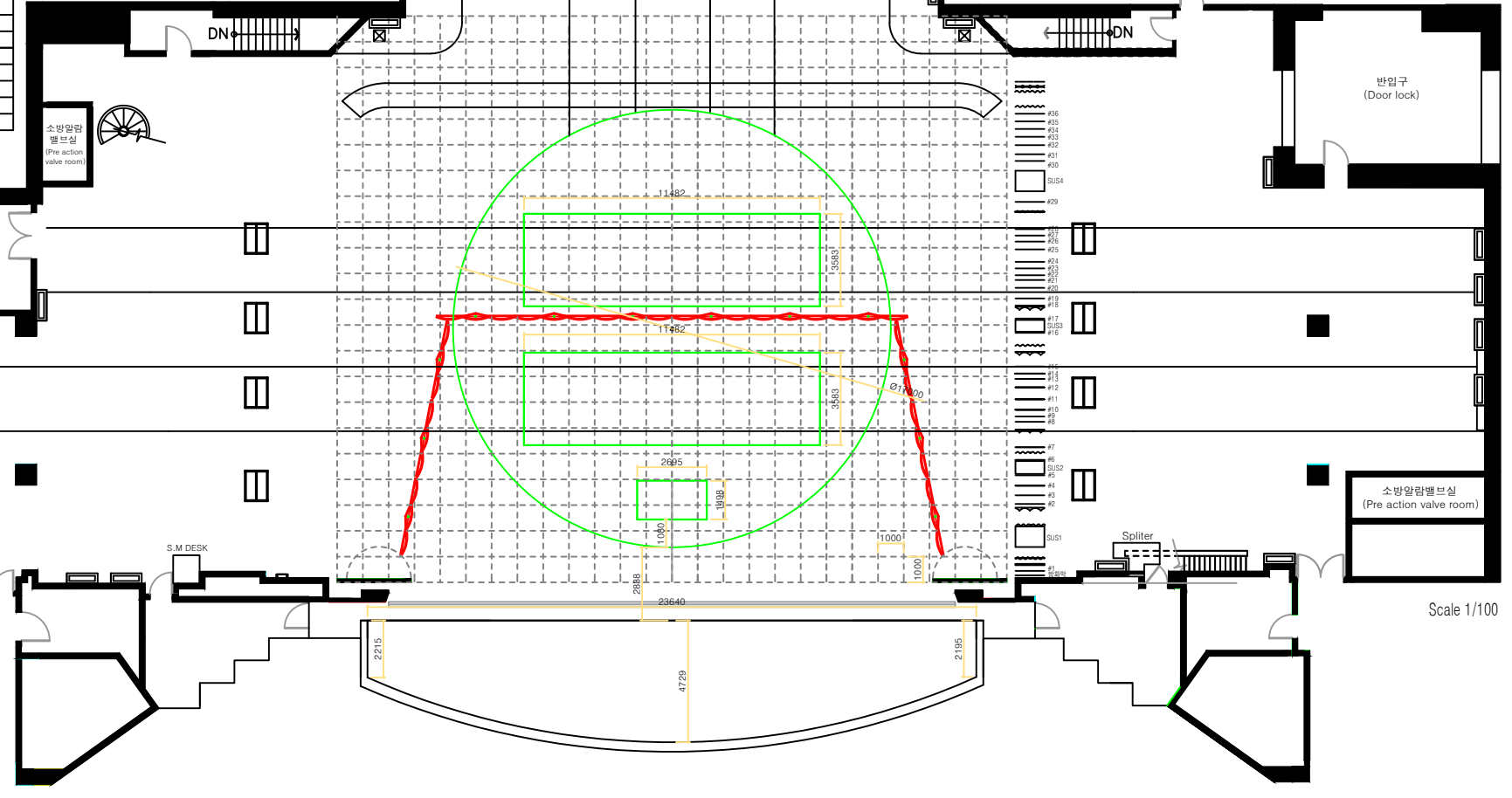
무대 기계 개요
(Organization of Stage)

회전무대 (Revolving Stage)	0-60rpm	가속 1.30(360도)		
승강 무대 (Flat Form)	UP	High 60 sec	DOWN	High 60 sec
	Low	210 sec	Low	210 sec
소형 승강 무대 (Small Flat Form)	UP	High 98 sec	DOWN	High 98 sec
	Low	195 sec	Low	195 sec
오케스트라 플랫폼 (ORCHESTRA Flat Form)	1m	High 25sec	1m	25 sec
		Low 50sec		
	2.54m	High 42sec	2.54m	42 sec
		Low 83sec		
	4.2m	High 105 sec	4.2m	105 sec
		Low 210sec		
이동 무대 (Stage Truck)	IN	0-55m/min	OUT	0-55m/min
본막 (Main Curtain)	UP	0-40m/min	DOWN	0-40m/min
하우스커튼 (House Curtain)	UP	0-40m/min	DOWN	0-40m/min
양막 No.1, 2, 3, 4 (Side Curtain)	UP	0-40m/min	DOWN	0-40m/min
REAR, LEFT 양막 (Side Curtain)	OPEN	0-20m/min	CLOSE	0-20m/min
양막 No.3 (Side Curtain)	UP	0-40m/min	DOWN	0-40m/min
백색막 (White Horizont)	UP	0-40m/min	DOWN	0-40m/min
표백막사막 (Rear Screen)	UP	0-40m/min	DOWN	0-40m/min
흑색막사막 (Black Horizont)	UP	0-40m/min	DOWN	0-40m/min
Proscenium Arch	WIDE	18-22m	High	12m
장치의 높이 (High of Setting of the Stage Truck)	무대 (Stage)			6m 90cm
좌측 하향 (Left Under Stage)	Left			4m 70 cm
	Right			4m 70cm



범례 (Legend)

	SET BATTEN
	MAIN CURTAIN
	HOUSE CURTAIN
	SIDE CURTAIN
	ACOUSTICAL SHELL
	WHITE HORIZONT
	REAR SCREEN
	BLACK HORIZONT
	SUB MIC POCKET
	MULTI POCKET
	STAGE MAIN PATCH
	PANORAMA
	AIR CONDITION



Scale 1/100